

Your Guide to Sightseeing Destinations and How to Get There

TRAIN



BUS



# Echizen-Kaga Public Transit Guide

A great guide to day trips from Kanazawa,  
covering everything from public transit to  
how to enjoy yourself at destinations!





Example Itinerary  
**A**

### A Day of Walking Around Three Hot Spring Towns

Start your day in Yamanaka Onsen, located along Kakusenkei Gorge, and enjoy a truly Japanese trip through three charming and distinct hot spring towns that boast centuries of history.

Yamanaka Onsen



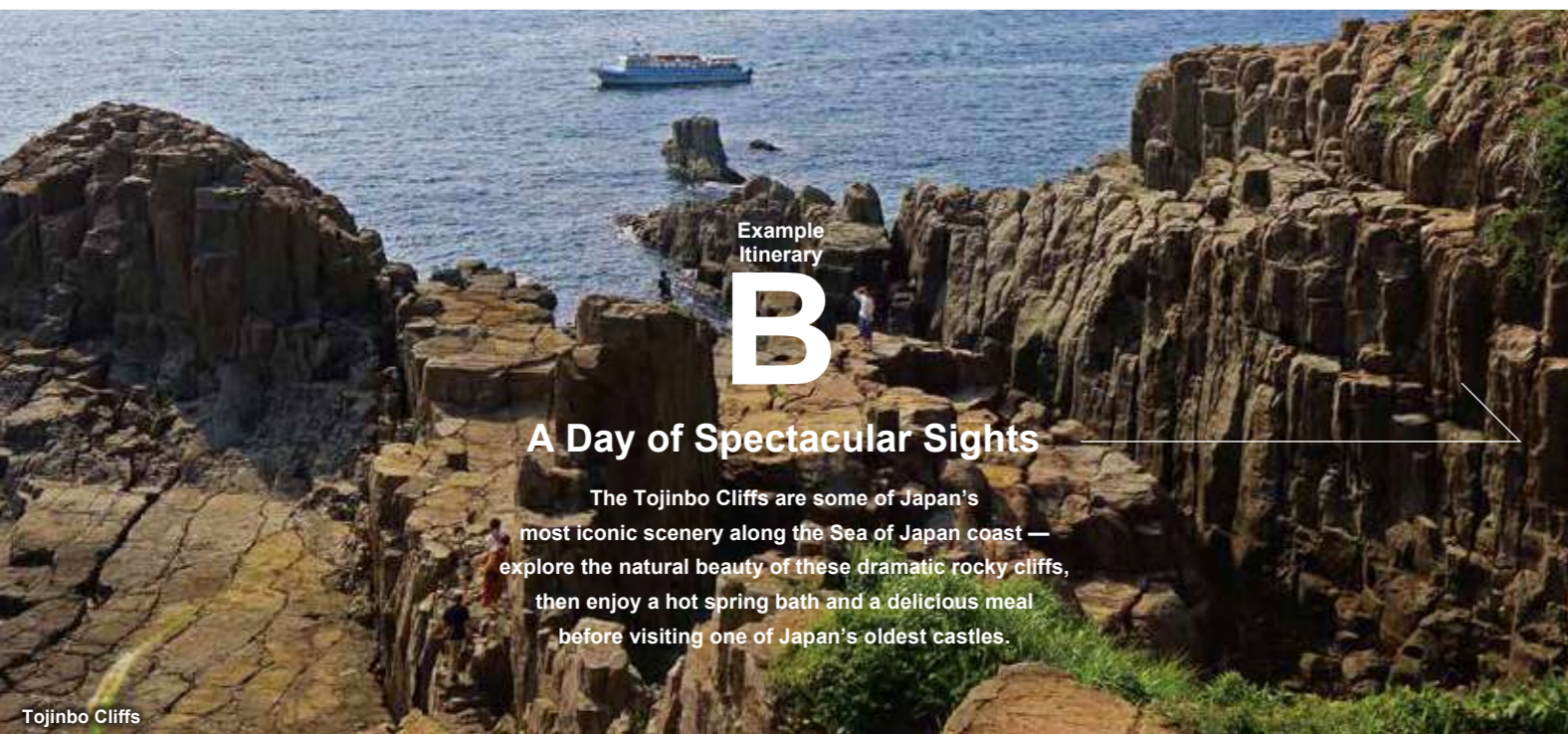
Kakusenkei Gorge Kawadoko Riverside Café (Yamanaka Onsen)



Hanayakata Former Geisha Agency (Katayamazuru Onsen)



Kaga Parfaits



Example Itinerary  
**B**

### A Day of Spectacular Sights

The Tojinbo Cliffs are some of Japan's most iconic scenery along the Sea of Japan coast — explore the natural beauty of these dramatic rocky cliffs, then enjoy a hot spring bath and a delicious meal before visiting one of Japan's oldest castles.

Tojinbo Cliffs



Geisha Dress-Up Experience (Awara Onsen)

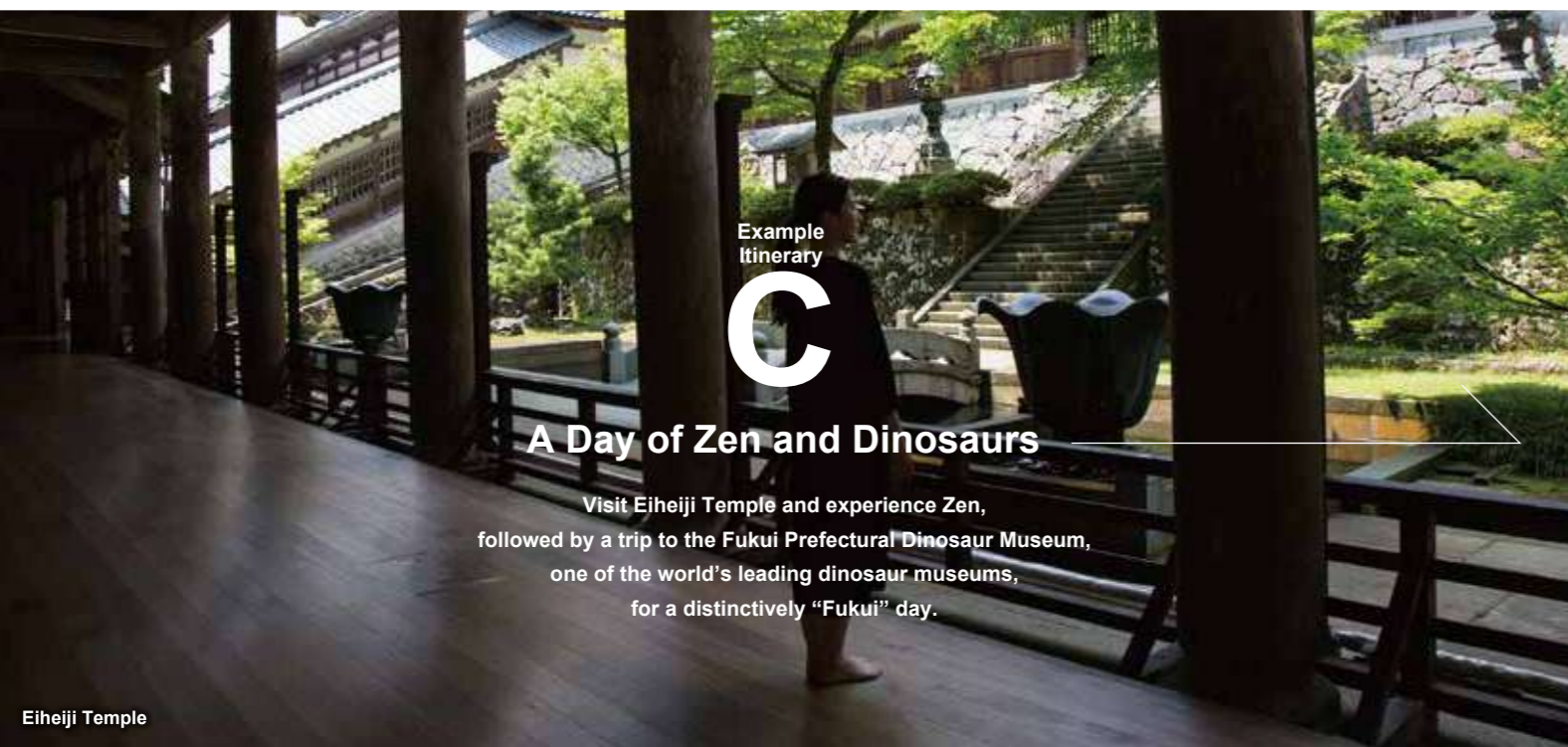
Fresh Seafood Bowls



Ashiyu Foot Bath (Awara Onsen)



Maruoka Castle



Example Itinerary  
**C**

### A Day of Zen and Dinosaurs

Visit Eiheiji Temple and experience Zen, followed by a trip to the Fukui Prefectural Dinosaur Museum, one of the world's leading dinosaur museums, for a distinctively "Fukui" day.

Eiheiji Temple



Katsuyama Station on the Echizen Railway

Shojin-ryori Buddhist Cuisine near Eiheiji Temple



Fukui Prefectural Dinosaur Museum

# Echizen-Kaga Quick-Reference Transit Map

### Handy info!

#### Keifuku Bus Tojinbo Route

The standard local buses.

JR Awaraozen Sta. → Awaro-Yunomachi Sta. → Tojinbo

7:40 → 7:56 → 8:20	12:40 → 12:56 → 13:23
8:40 → 8:56 → 9:20	13:10 → 13:26 → 13:53
9:40 → 9:56 → 10:23	13:40 → 13:56 → 14:23
10:10 → 10:26 → 10:53	14:10 → 14:26 → 14:53
10:40 → 10:56 → 11:23	14:40 → 14:56 → 15:23
11:10 → 11:26 → 11:53	15:10 → 15:26 → 15:53
11:40 → 11:56 → 12:23	15:40 → 15:56 → 16:23
12:10 → 12:26 → 12:53	16:40 → 16:56 → 17:20
18:10 → 18:26 → 18:50	

Tojinbo → Awaro-Yunomachi Sta. → JR Awaraozen Sta.

8:11 → 8:40 → 8:56	13:24 → 13:53 → 14:07
8:41 → 9:10 → 9:26	13:54 → 14:23 → 14:37
9:54 → 10:23 → 10:37	14:24 → 14:53 → 15:07
10:24 → 10:53 → 11:07	14:54 → 15:23 → 15:37
10:54 → 11:23 → 11:37	15:24 → 15:53 → 16:07
11:24 → 11:53 → 12:07	15:54 → 16:23 → 16:37
11:54 → 12:23 → 12:37	16:24 → 16:53 → 17:07
12:24 → 12:53 → 13:07	17:21 → 17:50 → 18:06
12:54 → 13:23 → 13:37	18:21 → 18:50 → 19:06

Times shown in orange run on weekdays only.  
Times shown in pink run on weekends and holidays only.

**Tojinbo Two-Day Pass**  
Great for sightseeing in the Tojinbo area!  
Prices: Adults (ages 12 and up) ¥1,200  
Children (ages 6-11) ¥600  
Available for Purchase at: Awaraozen Sta. information desk, the Sakai office, and Awaro-Yunomachi Sta. on the Echizen Railway

**Eiheiji & Tojinbo Two-Day Pass**  
Perfect for sightseeing in the Tojinbo and Eiheiji areas!  
Prices: Adults (ages 12 and up) ¥2,300  
Children (ages 6-11) ¥1,150  
Available for Purchase at: Fukui Sta. East Exit bus ticket center, Awaraozen Sta. information desk, the Sakai office, and Awaro-Yunomachi Sta. on the Echizen Railway

Contact: Keifuku Bus — Tel: (0776) 57-7700  
Sakai Office — Tel: (0776) 77-2046

#### CANBUS Kaga Tour Bus

A loop bus with service in the Kaga Onsen area (Yamanaka Onsen, Yamashiro Onsen, and Katayamazu Onsen) that passengers can get on and off of at any point along the route.

Mountain Route — Departure times from JR Kagaonsen Sta.: 9:00, 10:40, 11:20, 12:25, 14:10, 14:35, 16:20  
Sea Route — Departure times from JR Kagaonsen Sta.: 8:40, 9:10, 10:50, 12:40, 13:15, 14:20, 15:40

- Runs daily • 7 buses each for Mountain and Sea Routes • No reservations necessary

Prices:  
One-Day Pass: Adults ¥1,100  
Two-Day Pass: Adults ¥1,300 (Children 6-11 half price, and children under 6 free)

Contact: Machizukuri Kaga — Tel: (0761) 72-7777

#### Awara Gurutto Tour Bus

A bus to sightseeing destinations within Awara City.

Awaro-Yunomachi Sta. → JR Awaraozen Sta. → Awaro-Yunomachi Sta.  
JR Awaraozen Sta. → Awaro-Yunomachi Sta. → Awaro-Yunomachi Sta.

9:30 → 10:28	12:30 → 13:28
11:00 → 11:58	15:30 → 16:28
14:00 → 14:58	

- Runs on weekends and holidays (except new year holidays)
- 5 trips per day • No reservations necessary

Fares:  
Adults (ages 12 and up) ¥200 per ride, children (ages 6-11) ¥100 per ride

Contact: Awara City Tourist Information Center — Tel: (0776) 73-2290

#### Echizen Railway

Features two lines: the Mikuni Awara Line (Fukui Sta. ↔ Mikuni-Minato Sta.) and the Katsuyama Eiheiji Line (Fukui Sta. ↔ Katsuyama Sta.).

- Runs daily • 1-3 trains per hour
- Fares: ¥150 and up

**Echizen Railway One-Day Pass**  
Unlimited Echizen Railway train rides for one day!  
Prices: Adults (ages 12 and up) ¥1,000  
Children (ages 6-11) ¥500  
Available for Purchase at: Echizen Railway manned stations, and aboard trains

Contact: Echizen Railway — Tel: (0120) 840-508

#### Eiheiji Liner

A shuttle bus that directly connects the East Exit of Fukui Station with Eiheiji Temple.

Departures from East Exit of Fukui Sta.: 8:45, 9:20\*, 10:00, 10:50, 11:50, 12:55, 13:50, 14:50  
Departures from Eiheiji Temple Bus Stop: 9:20\*, 10:40, 11:30, 12:30, 13:30, 14:30, 15:30, 16:20

\*Runs only on weekends, holidays, and Dec. 30 to Jan. 3

- Runs daily • 7 trips per day (8 on weekends, holidays, and Dec. 30 to Jan. 3)
- No reservations necessary

One-Way Fares:  
• Fukui Sta. ↔ Eiheiji Temple: Adults ¥750, children ¥380

Contact: For questions about times or fares: Keifuku Bus Business Division  
Tel: (0776) 57-7700 (Weekdays only)  
For questions about bus operation status or lost items: Keifuku Limousine Bus, Maruoka Office  
Tel: (0776) 66-2800

#### Eiheiji Odekake Bus

Directly connects the Kaga Onsen area (Katayamazu Onsen, Yamashiro Onsen, and Yamanaka Onsen) with Eiheiji Temple.

Outbound Trip: Depart Katayamazu Onsen Soyu at 9:02, depart JR Kagaonsen Sta. at 9:15, depart Yamashiro Onsen Soyu/Kosoyu at 9:28, depart Yamanaka-za at 9:42, arrive at Eiheiji Inoue at 10:30  
Return Trip: Depart Eiheiji Inoue at 13:10, depart Yamanaka-za at 13:59, depart Yamashiro Onsen Soyu/Kosoyu at 14:12, arrive at Katayamazu Onsen Soyu at 14:38

(Both outbound and return trips have other stops, as well)

- Runs daily • 1 round trip per day • Priority given to reservations

One-Way Fares:  
• Katayamazu Onsen/JR Kagaonsen Sta. → Eiheiji: Adults ¥1,000  
• Yamashiro Onsen → Eiheiji: Adults ¥900  
• Yamanaka Onsen → Eiheiji: Adults ¥800  
(Children under 12 free, but reservations are necessary.)

Contact: Kaga City Tourist Information Center Tel: (0761) 72-6678

#### Direct Bus to Fukui Prefectural Dinosaur Museum

Directly connects Katsuyama Station on the Echizen Railway with the Fukui Prefectural Dinosaur Museum.

Departure Times from Katsuyama Sta.: 9:05, 9:33, 10:00, 11:00, 11:30, 12:30, 13:00, 14:00, 14:30, 15:00, 15:30, 16:00, 16:30  
Departure Times from Fukui Prefectural Dinosaur Museum: 9:17, 9:45, 10:13, 11:13, 11:43, 12:43, 13:13, 14:13, 14:43, 15:13, 15:43, 16:13, 16:43, 17:13, 17:43

- Runs on days when the Fukui Prefectural Dinosaur Museum is open
- 15 round trips per day • No reservations necessary

One-Way Fares: Adults ¥300, children ¥200

#### Katsuyama Gururin Community Bus

A bus service that operates on two loop routes in Katsuyama City, starting from Katsuyama Station on the Echizen Railway.

Departure Times from Katsuyama Sta.: 8:03 (does not run Sun. or holidays), 9:33, 10:23, 11:53, 13:23, 15:53, 16:53  
Departure Times from Fukui Prefectural Dinosaur Museum: 8:17 (does not run Sun. or holidays), 9:47, 10:37, 12:07, 13:37, 16:07, 17:07

- Runs daily • 7 round trips per day (6 on Sun. and holidays) • No reservations necessary

One-Way Fares: Adults ¥300, children ¥200

#### Dainagon Dinosaur Bus (Katsuyama City Sightseeing Bus)

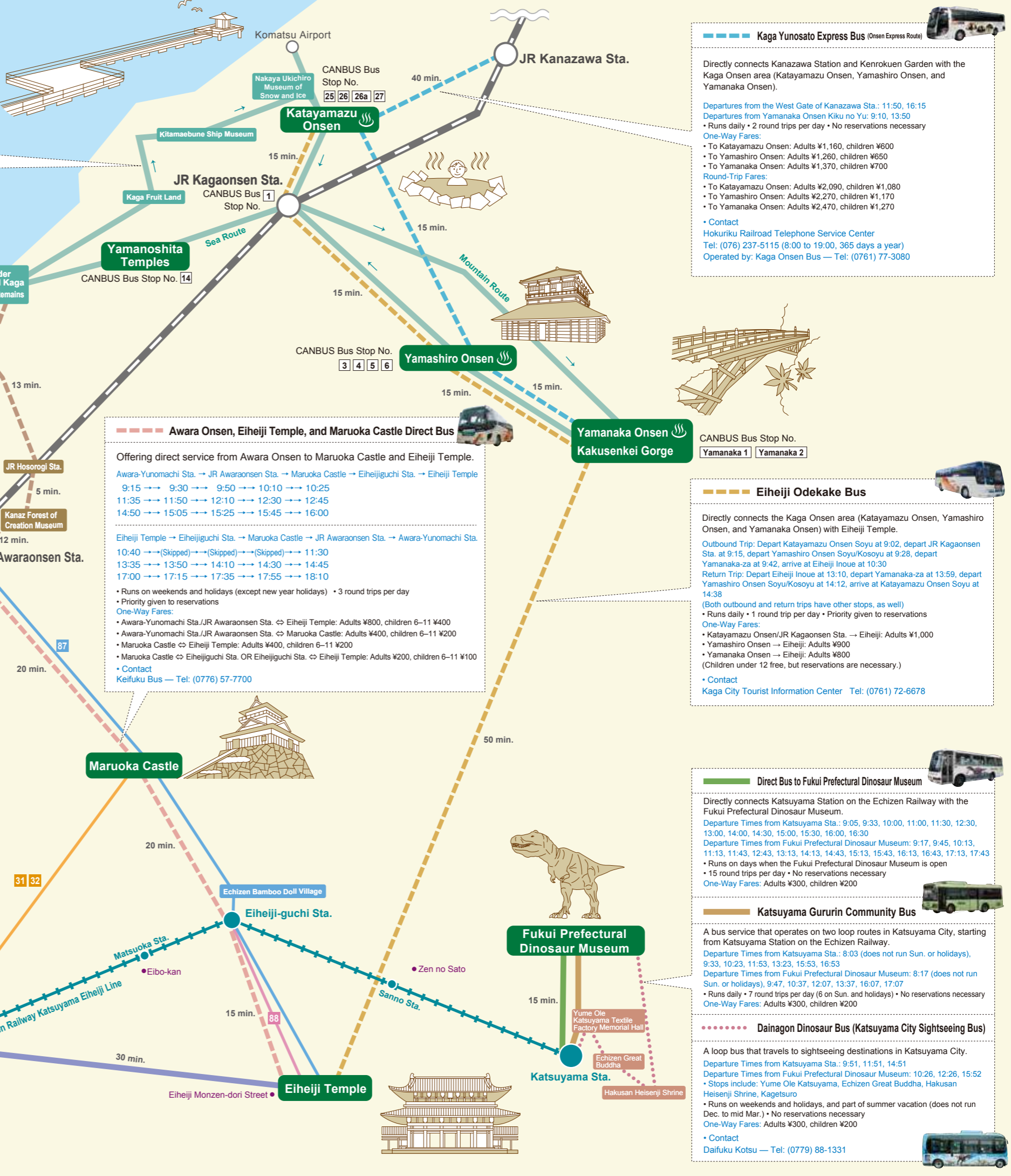
A loop bus that travels to sightseeing destinations in Katsuyama City.

Departure Times from Katsuyama Sta.: 9:51, 11:51, 14:51  
Departure Times from Fukui Prefectural Dinosaur Museum: 10:26, 12:26, 15:52

- Stops include: Yume Ole Katsuyama, Echizen Great Buddha, Hakusan Heisenji Shrine, Kagetsuro
- Runs on weekends and holidays, and part of summer vacation (does not run Dec. to mid Mar.) • No reservations necessary

One-Way Fares: Adults ¥300, children ¥200

Contact: Daifuku Kotsu — Tel: (0779) 88-1331



**CANBUS Kaga Tour Bus**

**Kaga Yunosato Express Bus (Onsen Express Route)**

**Eiheiji Odekake Bus**

**Awara Onsen, Eiheiji Temple, and Maruoka Castle Direct Bus**

**Awara Gurutto Tour Bus**

**Eiheiji Liner**

**Katsuyama Gururin Community Bus**

**Direct Bus to Fukui Prefectural Dinosaur Museum**

**Dainagon Dinosaur Bus (Katsuyama City Sightseeing Bus)**

**Echizen Railway**

**Keifuku Bus Tojinbo Route** 84 85

**Keifuku Bus Awara Maruoka Eiheiji Route** 87

**Keifuku Bus Eiheiji Route** 88

**Keifuku Bus Maruoka Route** 31 32

Enjoy a day trip from Kanazawa to Echizen-Kaga, where authentic Japanese culture lives on. Here are just a few suggestions for ways to enjoy the real Japan.



## Example Itinerary A: A Day of Walking Around Three Hot Spring Towns

JR (Limited Express)  
CANBUS Kaga Tour Bus



### 1 Yamanaka Onsen & Kakusenkei Gorge

In the 1,300 years since the discovery of its hot spring, this green, mountainous area has developed into a charming hot spring town. Yuge-Kaido street features restaurants, galleries, and more, making it delightful for a walk. The nearby Kakusenkei Gorge is one of the most beautiful gorges in the Hokuriku region, and it offers a 1.3 km walking path featuring seasonal natural beauty, remarkable stone formations, and lovely bridges. From April through October, visitors can also enjoy sweets at the Kawadoko riverside café.

Yamanaka Onsen, Kaga City, Ishikawa Prefecture  
Tel: (0761) 78-0330 (Yamanaka Onsen Tourist Association)

### 2 Yamashiro Onsen

This hot spring town's history traces back to the discovery of a hot spring by the monk Gyoki in the year 725. The center of town is home to the newly built Soyu public bath and Kosoyu, a public bath built as a reproduction of a Meiji-era (1868–1912) public bath.

Yamashiro Onsen, Kaga City, Ishikawa Prefecture  
Tel: (0761) 77-1144 (Yamashiro Onsen Tourist Association)

### 3 Yamanoshita Temples

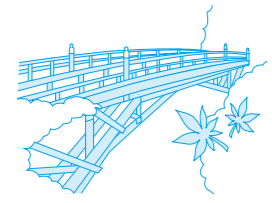
Today, the seven temples and one shrine of the Yamanoshita Temples are a great place to enjoy a charming walk. Zenshoji temple is a Soto Zen Buddhist temple once visited by the haiku poet Basho, and for over a century it has been home to over 500 rakan Buddhist statues.

Daishoji, Kaga City, Ishikawa Prefecture  
Tel: (0761) 72-6678  
(Kaga City Tourist Information Center)

### 4 Katayamazu Onsen

Enjoy beautiful views of the sacred Mt. Hakusan from this lakeside hot spring town. The town's hot spring water has warming effects, said to help prevent chills from poor circulation. The lake's surface takes on a wide variety of colors over the course of a single day, and this hot spring town makes the perfect place to enjoy it.

Katayamazu Onsen, Kaga City, Ishikawa Prefecture  
Tel: (0761) 74-1133  
(Katayamazu Onsen Information Center)



## Example Itinerary B: A Day of Spectacular Sights

JR (Limited Express)  
Keifuku Bus Tojinbo Route 84 85  
Keifuku Bus Maruoka Route 31 32  
Direct Bus to Awara Onsen, Eiheiji Temple, and Maruoka Castle



Yukemuri Food Stall Village



### 1 Tojinbo Cliffs

The Hokuriku region's finest natural scenery, and nationally designated as a natural monument. The rocky coast was gradually worn down by the rough waves of the Sea of Japan after forming as giant columns of rock with sheer, dramatic cliffs, for spectacular scenery across roughly a kilometer-long stretch of the coastline. The Tojinbo cliffs are incredible through all four seasons: enjoy the blue of the sea below the blue of the sky on clear days, or deep red sunsets, whereas in winter the snow blows up from the sea below — just some of the remarkable sights you can see here.

Tojinbo, Mikuni-cho, Sakai City, Fukui Prefecture  
Tel: (0776) 82-5515 (Mikuni Tourism Association)

### 2 Awara Onsen

Established in 1883, and known as one of Fukui Prefecture's finest hot spring towns. Awara Onsen's 74 different source springs give each hotel and inn unique water characteristics — perfect for enjoying and comparing different baths. The town is also known for one of the Hokuriku region's largest foot baths (free), and Yukemuri Food Stall Village makes a great dinner destination.

Onsen, Awara City, Fukui Prefecture  
Tel: (0776) 77-1877 (Awara Yunomachi Station Tourist Information Center)

### 3 Maruoka Castle

In 1576, Shibata Katsuiie had his nephew, Katsutoyo, build this castle by order of Oda Nobunaga. Of the twelve castle towers still standing in Japan, Maruoka Castle's features the oldest architectural style. Nationally designated as an important cultural property.

1-59 Maruoka-cho Kasumi-cho, Sakai City, Fukui Prefecture  
Tel: (0776) 66-0303 (Kasumigajo Park Office)

## Example Itinerary C: A Day of Zen and Dinosaurs

JR (Limited Express)  
Echizen Railway  
Direct Bus to Awara Onsen, Eiheiji Temple, and Maruoka Castle  
Keifuku Bus Awara Maruoka Eiheiji Route 87  
Keifuku Bus Eiheiji Route 88  
Katsuyama Gururin Community Bus  
Direct Bus to Fukui Prefectural Dinosaur Museum  
Dainagon Dinosaur Bus (Katsuyama City Sightseeing Bus)

One of the World's Largest Dinosaur Museums!



### 1 Eiheiji Temple

Built in the year 1244 by the monk Dogen, Eiheiji is the head temple of the Soto school of Zen Buddhism. The grounds span 330,000 square meters, featuring over 70 buildings of varying sizes and surrounded by sugi cedar trees some 700 years old, and even today, monks come here from across Japan to train. Visitors are also welcome to try hands-on Zen experiences like zazen seated meditation and copying sutras.

5-15 Shihi, Eiheiji-cho, Yoshida District, Fukui Prefecture  
Tel: (0776) 63-3102

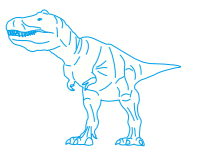
### Walk along Eiheiji Monzen-dori Street

The street to Eiheiji Temple's front gate has a charming atmosphere, and makes a great sightseeing destination, with plenty of restaurants and shops offering souvenirs. Enjoy local specialties like sauce katsu-don pork outlet bowl, Eiheiji soba noodles, go-rieki dango dumplings, and sesame dumplings.

### 2 Fukui Prefectural Dinosaur Museum

Featuring dinosaur skeletons, fossils, and other specimens in the domed Dinosaur Hall exhibition room, as well as giant animated dioramas. Don't miss the restored full-body skeletons of the Fukuisaurus and Fukuiraptor, both discovered in Katsuyama! The museum also features fascinating natural science exhibits on the evolution of ancient animals, the geology of the planet Earth, and more, showing how the world came to be the way it is today. Visitors can also try a hands-on fossil excavation experience.

51-11 Terao, Muroko-cho, Katsuyama City, Fukui Prefecture  
Tel: (0779) 88-0001



Just 40 min. by train from Kanazawa!

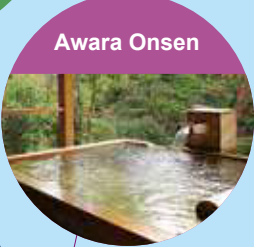
# Echizen-Kaga

## AREA MAP

Kaga City, Awara City, Sakai City, Eiheiji Town, and Katsuyama City



Yamanoshita Temples



Awara Onsen



Tojinbo Cliffs



Katayamazu Onsen



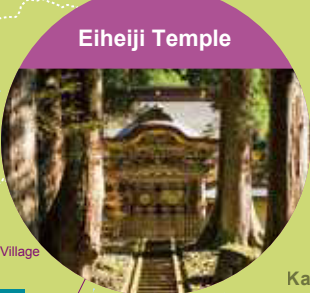
Yamashiro Onsen



Yamanaka Onsen & Kakusenkei Gorge



Mikuni Onsen



Eiheiji Temple



Fukui Prefectural Dinosaur Museum



Maruoka Castle

<http://echizenkaga.jp>

Get information about Echizen-Kaga in 4 languages!



Information shown is accurate as of October 2019.